

# CHURCH GREEN

CHURCH LANE, ASTON CLINTON, BUCKINGHAMSHIRE HP22 5HJ

Plot No.

1087 sq ft

1-3



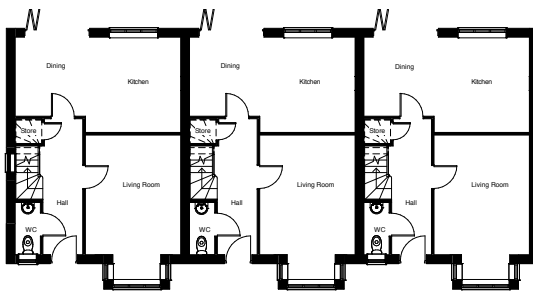
## CHURCH GREEN

— ASTON CLINTON —

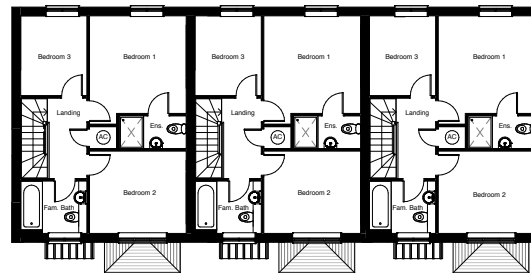
### Key features

- ❖ A pretty terrace of 3 bedroom properties
- ❖ Located opposite the Listed church of St Michael and All Angels
- ❖ Kitchen / Diner with bi-fold doors opening onto the sandstone patio and private, turfed, garden
- ❖ Two off-street parking spaces
- ❖ Underfloor heating on the ground floor
- ❖ Ensuite shower room to main bedroom
- ❖ Boarded attic for storage

### Ground floor



### First floor



**Kitchen / Diner**  
6.1m x 3.5m

**Living Room**  
3.5m x 5.3m (Into bay)

**Bedroom 1**  
3.6m x 3.5m

**Bedroom 2**  
3.0m x 3.5m

**Bedroom 3**  
2.5m x 2.9m



For more information please call Laxton Properties on 01442 878 982 or email [info@laxtonproperties.co.uk](mailto:info@laxtonproperties.co.uk)  
[www.laxtonproperties.co.uk](http://www.laxtonproperties.co.uk)

**Please note:** All measurements are indicative and subject to normal build tolerances. All measurements are maximum dimensions (excluding alcoves for door openings) and are rounded to the nearest single decimal place.